



Suspended Cable System

1.5mm Cable

3mm Cable

6mm Rod

Wall-mount Fittings

Acrylic Displays

Cable-Box

Suspended Cable System

PAGE NO#

H1	1.5mm Cable Kits
H2	1.5mm Cable Fittings
H3	Auto Cable System
H4	Auto Cable System
H5	3mm Cable System
H6	6mm Rod System
H7	Photo Pockets
H8	Hanging / Wall-Mount Fittings
H9	Cable / Rod Components
H10	

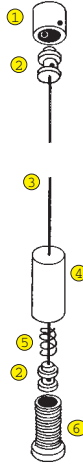


FLOOR-CEILING KIT

AP1800

Provides the universal solution for display builders. Use either floor-ceiling application or as a shelving system inside cabinetry.

Kit includes 3.6 metres of 1.5mm diameter stainless steel cable.



MOUNTING TRACK

Aluminium extrusion allows for lateral adjustment of individual vertical cables and rods.

Maybe recessed into board to make flush fitting.

AP8852

Aluminium top & bottom track. Length - 4000mm. Available in Mill Finish (M) or Anodised (A).

AP1826

Threaded plate & screw (set consists of 1 plate & 1 screw).



WALL-FLOOR POSTER KIT

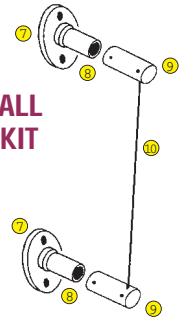
AP1801

Designed to display vertical panels 45mm from wall.



WALL-WALL POSTER KIT

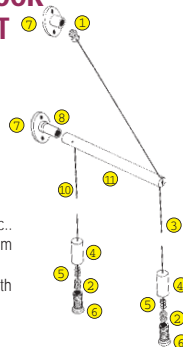
AP1802



WALL-FLOOR SHELF KIT

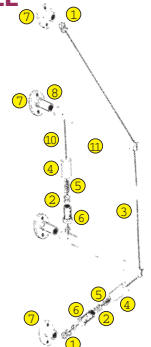
AP1805

Designed for shelving, panels etc.. Rod length - 260mm from wall. Minimum shelf width - 215mm (when horizontal).



WALL-WALL SHELF KIT

AP1806



1.5mm CABLE FITTINGS

CABLE FASTENER

AP1812

Attaches to cable M4 thread through centre.
Size: 20mm dia. x 13mm long.



SIDE MOUNT PANEL SUPPORT

AP1815

Attaches to sides or top/bottom of panel.
Max. Panel thickness - 10mm.
Cable to back of panel 30mm.



THROUGH-HOLE SHELF SUPPORT

AP1811

Requires 9mm dia. hole in shelf. Can be used with any thickness material.
Size: 20mm dia. x 13mm high.



BANNER RAIL FITTING

AP1825

Push fit onto ends of banner/hangrail.
2 fittings required per rail.



SINGLE FITTING

Swivel fitting allows for mounting of flat or sloping shelves or vertical display panels. Size - 20mm dia. x 30mm long.

AP1813

To suit panel thickness of 3mm.

AP1817

To suit panel thickness of 7mm.

AP1819

To suit panel thickness of 10mm.



BANNER/HANGRAIL TUBING

AP1820

20mm dia. anodised aluminium tubing.
Priced per metre.



Shown with AP1825 end fitting.

DOUBLE FITTING

Swivel fitting supports shelves etc., on either side of a central cable.
Size - 20mm dia. x 40mm long.

AP1823

To suit panel thickness of 3mm.

AP1827

To suit panel thickness of 7mm.

AP1829

To suit panel thickness of 10mm.



BANNER SUPPORT SYSTEM

2 x lengths of anodised aluminium with 4 x cable fittings.
Specify length.

AP1825 (x 4)

Banner rail fitting.

AP1820 (x 2)

Banner/hangrail tubing (cut to length).

THROUGH-HOLE PANEL FITTING

AP1814

Requires 14mm dia. hole through panel.
Max. Panel thickness - 10mm
Cable to back of panel 30mm



AUTO CABLE SYSTEM

The AUTO range fitting provide a unique alternative that doesn't require any screw fastening onto the cable. The fitting simply adjusts to the required height at the touch of a button. Once released, the clamp will automatically engage on the cable with no need for allen screws.



AUTO fittings need to be threaded onto cable prior to assembling. Available in polished chrome finish.

FLOOR-CEILING KIT

The fastest cable kit installation available. Simply attach top and bottom fittings, insert cable and tension by pulling cable through the fitting with a pair of pliers. The AUTO system will lock onto the cable and hold secure. Simply trim off excess cable that protrudes from bottom fitting.



AP1804
Top and bottom fitting.

AP1804A
1.5mm cable - 4mtr length.

SINGLE SHELF FITTING

AP1975
Accepts up to 10mm thick shelf.



DOUBLE SHELF FITTING

AP1976
Accepts up to 10mm thick shelf.



SINGLE SWIVEL FITTING

AP1979
Accepts up to 10mm thick shelf/panel.



DOUBLE SWIVEL FITTING

AP1978
Accepts up to 10mm thick shelf/panel.



THROUGH HOLE SHELF SUPPORT

AP1977
Hole size: 13mm
Max. shelf thickness: 10mm



THROUGH HOLE SHELF SUPPORT

AP1977A
Hole size: 13mm
Overall dia: 18mm.
Able to support any thickness shelf.



PICTURE HANGING SYSTEMS

The aluminium track is fixed to the wall or ceiling. The swivel top fitting simply slides into the end of the track. Set the AUTO hook fitting at the required height and you artwork is ready to hang.

This system allows for infinite adjustment with no tools required. Additional hook fittings can be added so that you can hang more than 1 picture in a vertical drop.

Aluminium Track

AP8852

4 metre length. Available in Mill Finish (M) or Anodised (A).



Top swivel fitting in aluminium track.

Hanging Kit

Includes swivel top fitting with cable and 1 x AUTO hook fitting that can be adjusted at the push of a button.



AP1970

900mm cable.

AP1972

2000mm cable.

Additional Hook Fitting

AP1971



HANGING KIT

AP1950

2 piece screw on fixing.

AP1951

1 metre cable with ball end.



SWIVEL MOUNTING BRACKET

AP1961

For attaching picture frames etc.



SWIVEL TENSION FITTING

Swivels and rotates in both directions, allowing for cable to be tensioned at any angle.



AP1960

Swivel fitting.

AP1875

1.5mm cable. Per mtr.

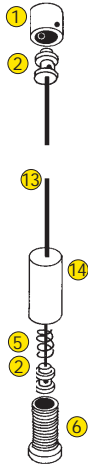


DOUBLE PANEL SUPPORT

For 4-6mm thickness panels.

AP1821





FLOOR-CEILING KIT

The 3mm diameter cable provides additional stability to the cable installation, making it ideal for longer lengths and heavier displays.

Kit includes 4 metres of 3mm diameter stainless steel cable. 3mm thick cable is suitable for use with low voltage lighting.

AP1840

SIDE-MOUNT PANEL SUPPORT

AP1845

Attaches to sides or top/bottom of panel. Max. Panel thickness - 10mm. Cable to back of panel 30mm.



CABLE FASTENER

AP1842

Attaches to cable
M4 thread through centre.
Size: 20mm dia. x 13mm long.



SINGLE FITTING

Swivel fitting allows for mounting of flat or vertical shelves or vertical display panels.
Size - 20mm dia. x 30mm long.

AP1843

To suit panel thickness of 3mm.

AP1846

To suit panel thickness of 7mm.

AP1848

To suit panel thickness of 10mm.



THROUGH-HOLE SHELF SUPPORT

AP1841

Requires 9mm dia. hole in shelf.
Can be used with any thickness material. Size: 20mm dia. x 15mm high.



DOUBLE FITTING

Swivel fitting supports shelves etc., on either side of central cable. Size - 20mm dia. x 40mm long.

AP1844

To suit panel thickness of 3mm.

AP1847

To suit panel thickness of 7mm.

AP1849

To suit panel thickness of 10mm.



THRU-HOLE PANEL SUPPORT

AP1834

Requires 14mm dia. hole through panel. Max. Panel thickness - 10mm. Cable to back of panel 30mm.



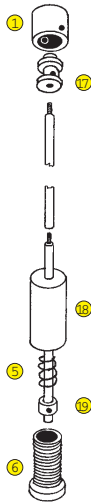
BANNER/HANGRAIL FITTING

AP1828

Refer to pH2 for hangrail tubing



6mm ROD SYSTEM



FLOOR-CEILING KIT

Rod purchased separately.

AP1900

6mm CHROME ROD - 1000mm (L)

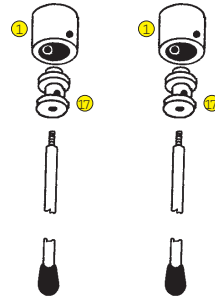
Based on a similar concept to the proven performance of the cable kits, the rod display system offers certain advantages due to its additional rigidity. The chrome plated steel rod comes in 1.0mtr lengths that can be simply joined together and trimmed to make up the exact length required. Includes 1 off M4 x 16 grub screw for joining rods)

AP1910

ROD HANGING KIT

AP1940

Pair of ceiling fittings
and chrome rods
- 500mm long.



ROD FASTENERS



AP1912

Attaches various furniture items to rod, has M4 thread through centre. Size: 20mm dia. x 16mm long.

SINGLE FITTING

Swivel fitting allows for mounting of flat or sloping shelves or vertical display panels. Size: 20mm dia x 33mm long.

AP1913

To suit panel thickness of 3mm.

AP1917

To suit panel thickness of 7mm.

AP1919

To suit panel thickness of 10mm.



THRU-HOLE SUPPORT

AP1914

Requires 14mm dia. hole through panel. Max panel thickness - 10mm.

Rod to back of panel - 30mm



DOUBLE FITTING

Swivel fitting supports shelves etc., on either side of a central cable. Size: 20mm dia x 48mm long.

AP1923

To suit panel thickness of 3mm.

AP1927

To suit panel thickness of 7mm.

AP1929

To suit panel thickness of 10mm.



SIDE-MOUNT PANEL SUPPORT

AP1915

Attaches to sides or top/bottom of panel. Max panel thickness - 10mm.

Rod to back of panel - 30mm



MINI FITTINGS

Unobtrusive miniature fittings for attaching vertical up to 4mm thick.



AP1898 - Single.
12mm dia. x 25mm long.

AP1899 - Double.
12mm dia. x 35mm long.

POSTER DISPLAY SLEEVES

Folded clear acrylic, easy access pockets allow for easy changing of poster without touching the panel fittings.



AP1892P

AP1882P

Cable Spacing (mm)

AP1881P	Single A4 portrait	265
AP1882P	Double A4 portrait	490
AP1883P	Triple A4 portrait	715
AP1881L	Single A4 landscape	355
AP1882L	Double A4 landscape	670
AP1885P	Single A3 portrait	355
AP1886P	Double A3 portrait	670
AP1885L	Single A3 landscape	490
AP1892P	Single A2 portrait	490
AP1892L	Single A2 landscape	670
AP1891P	Single A1 portrait	670
AP1891L	Single A1 landscape	895
AP1890P	Single A0 portrait	895
AP1890L	Single A0 landscape	1245



Items with the same cable spacing can be used in a vertical line. Easy access pockets allow graphics to be removed without undoing the panel fittings.

BROCHURE DISPLAY SYSTEM

Allows you to order an acrylic backing panel to your specified size with the required combination of injection-moulded brochure holders attached. Choose between clear or coloured acrylic backing panels.

Backing Panel

6mm acrylic - priced per square metre. Includes edge polishing.

AP1887 - Clear

AP1888 - Standard colours: Black, White, Opal (translucent), Green or Pink Fluorescent, Glass Green. Other colours available at extra cost.



Brochure Holder Attachments
Injection-moulded clear acrylic pockets. Priced each.

AP1894 - A4 - 50mm deep.



AP1896 - DL - 25mm deep.



AP1897 - Business card portrait. Price includes attaching to the backing panel according to your specification.

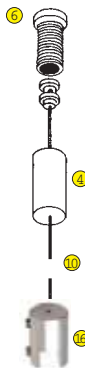


AP1895 - Business card landscape.

HANGING/WALL-MOUNT FITTINGS

HANGING KITS

1 poster holder requires 2 hanging kits.



AP1803

To suit panel thickness of 3mm.

AP1807

To suit panel thickness of 7mm.

AP1809

To suit panel thickness of 10mm.

EDGE-GRIP PANEL HOLDERS



Simply tighten onto the edges of the panel at top, bottom or sides. Attach to wall through centre of shaft, slide on panel fixing and tighten grub screw.



AP1832

Max panel thickness - 4mm.
Gap from wall - 25mm.



AP1835

Max panel thickness - 7mm.
Gap from wall - 40mm.



AP1831

Max panel thickness - 10mm.
Gap from wall - 25mm.

WALL-CEILING PANEL SUPPORTS

For small signage and shelf applications.



AP1833

To suit panel thickness of 3mm.

AP1837

To suit panel thickness of 7mm.

AP1839

To suit panel thickness of 10mm.

SHELF SUPPORT

Heavy duty curved bracket for attaching shelf up to 8mm thickness with cushioned tightening screw. Size: 73mm long x 23mm wide.

AP1836

Polished chrome finish.

AP1838

Satin chrome finish.



THROUGH-HOLE PANEL FITTINGS



Requires 14mm dia. hole in panel. Mix and match components to provide the required combination of wall spacing and panel thickness.

Wall-Mounting Barrel

AP1858

Barrel - 20mm dia.
Length - i.e. gap from wall - 25mm

AP1861

Barrel - 20mm dia.
Length - i.e. gap from wall - 55mm

Screw

AP1856

To suit max. panel thickness - 16mm

AP1859

To suit max. panel thickness - 10mm



WALL-MOUNT ROD FITTING



AP1835

Rod-wall-mount fitting.
Priced each

AP1910

Chrome rod 1000mm.
Can be joined together to form longer lengths.



COMPONENTS

H9

TOP MOUNT

AP1853

Size: 20mm dia. x 20mm long.



CABLE GRIPPER

Size: 10mm dia. x 14mm long.

AP1850

1.5mm dia.

AP1852

3mm dia.



1.5mm Dia. CABLE

AP1876

With bulb fitting, 4mm long.



TENSIONING SLEEVE

AP1860

Size: 20mm dia. x 45mm long.



SPRING

AP1877



FLOOR FIXING

AP1855

Size: 20mm dia. x 30mm long.



WALL FLANGE

AP1865

Size: 53mm x 32mm with 3/16" threaded centre hole.



WALL SPIGGOT

AP1857

Size: 20mm dia. x 30mm.



WALL CABLE SPACER

AP1870

Size: 20mm dia. x 55mm long.



EXTENSION ARM

AP1871

Size: 20mm dia. x 250mm long.



TOP MOUNT - LARGE

AP1854

Size: 20mm dia. x 30mm long.



ROD CLIP

AP1862

Size: 10mm dia. x 10mm long.



3mm Dia. CABLE

AP1873

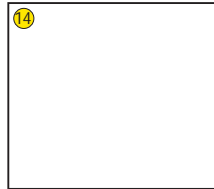
With bulb fitting, 4mm long.



TENSIONING SLEEVE

AP1866

Size: 20mm dia. x 45mm long.



ROD GRIPPER

AP1851

Size: 20mm dia. x 14mm long.



ROD TENSIONING SLEEVE

AP1861 - Size: 20mm dia. x 45mm.



HANGING CONNECTOR

Size: 20mm dia. x 30mm long.



AP1803BTM
4mm panel.

AP1807BTM
7mm panel.

AP1809BTM
9mm panel.

1.5mm Dia. CABLE

AP1875

Stainless steel. Priced per metre.



3mm Dia. CABLE

AP1878

Stainless steel. Priced per metre.



ALLEN KEYS

AP1816
2mm for cable kits.

AP1810
3mm for cable fittings.

AP1818
4mm for rod fittings.

